

FISCAL YEAR 2011 ANNUAL REPORT

OVERVIEW OF ACCOMPLISHMENTS

In fiscal year 2011, we experienced continued high demand for our free legal services in the areas of matrimonial, family and immigration law. A total of 2,630 women and their 4,379 children received direct representation and/or legal advice and assistance from inMotion's volunteers and staff.

Some highlights:

- We assigned 503 new matters to pro bono lawyers and staff attorneys, an increase of 15% over the prior year
- Our staff attorneys provided intensive mentoring to pro bono attorneys who worked on 1,291 pro bono matters throughout last year
- Staff attorneys provided advice and/or brief assistance to 1,297 pro se clients and we provided referrals to 211 women for whom we were not able to recruit a pro bono attorney or to provide pro se assistance
- Four new firms became Corporate Partners of inMotion in fiscal year 2011: Baker & Hostetler LLP, Cadwalader, Wickersham & Taft LLP, Thomson Reuters and Wachtell, Lipton, Rosen & Katz
- Attorneys from several new firms volunteered for the first time last year bringing the total number of law firms and corporations providing pro bono legal services to nearly 80

THE WOMEN WE SERVE

The women and children served by inMotion reside in all five boroughs of New York City:

- 41% live in the Bronx, the City's poorest borough and the poorest urban county in the U.S.
- 27% live in Queens, the borough with the highest concentration of immigrants
- 50% are Latina, 28% are African-American and 13% are Asian or a member of another minority group
- 34% of our clients speak a language other than English—1 out of every 4 women we serve cannot access the legal system without an interpreter and 85% of our Spanish-speaking clients require interpretive services
- 77% of our clients are victims of domestic violence
- 76% are mothers

THE MULTIPLIER EFFECT—INMOTION'S LEVERAGE MODEL

In fiscal year 2011, more than 2,200 volunteers donated professional and other services valued at over \$30 million, representing more than 76,000 hours of service. By harnessing the power of volunteers,

our small legal staff of 15 delivered more than 110,000 hours of legal services during the fiscal year—the equivalent of 55 full-time legal professionals.

This leveraging of legal volunteers means that every dollar donated to inMotion results in the delivery of \$6 worth of services.

EXPANDED PRESENCE IN BROOKLYN

In March 2011, we agreed with the Mayor's Office to Combat Domestic Violence to move from serving as an off-site to an on-site partner at the Brooklyn Family Justice Center (FJC). One of our staff attorneys began working one day per week at the Brooklyn FJC in June, coverage that was expanded to two days per week in October.

At our Bronx, Queens and Brooklyn FJC offices, we are able to work closely with the service providers, district attorneys' offices and the police to streamline referrals of clients. The easy accessibility and high visibility of inMotion's presence in the FJCs greatly expands our ability to reach women who are isolated in their communities by language and social barriers.

NEW AND EXPANDED OFFICE

Throughout 2011, we conducted a search for new Manhattan office space, working towards a move at year-end, prior to the January 2012 expiration of our non-renewable lease at 70 West 36th Street, where our offices had been located since 1998. We signed a lease for our new office at 100 Broadway in May 2011 and moved into the space in mid-December.

Leading the list of benefits for this property is its proximity to public transportation, a critically important requirement for our staff given their need to travel regularly to the FJCs in the Bronx, Queens and Brooklyn and to the Manhattan-based law firms that provide pro bono support for our clients. In addition, the office is significantly larger than our prior space, offering us the capacity to:

- Increase our staff by 50%
- Double the number of full-time externs funded by major law firms
- Almost triple the number of on-site volunteers working under staff direction
- Expand our meeting space by 450% for in-person one-on-one meetings with clients, department and team planning sessions, CLE training programs and other professional gatherings

We are confident that this new office will meet our staffing and volunteer needs for the next ten years, the initial term of the lease.

STAFF AND EXTERNS

Our staff currently totals 32 employees and our legal team totals 17 (a senior director, nine staff attorneys, two managers and five paralegals). Twelve members of our staff speak Spanish and our phones are answered daily in all four of our offices by Spanish-speakers. Other fluencies among our staff members include Cantonese, Creole, French, Gallego, Hebrew, Italian, Korean, Romanian and Russian.

In addition, we are fortunate to have the program support of full-time externs from Sidley Austin LLP, White & Case LLP and Willkie Farr & Gallagher LLP and a full-time fellow funded by Fried, Frank, Harris, Shriver & Jacobson LLP. These attorneys provide immediate in-court representation to women with emergency situations. Each of them regularly handles 20-25 active cases, receiving daily mentoring from inMotion staff attorneys.

MISSION STATEMENT

Since 1993, inMotion has helped thousands of women free themselves from abusive relationships, stay in their homes and win the financial support to which they—and their children—are legally entitled. Our mission is to make a real and lasting difference in the lives of women—low-income, under-served, abused—by offering them legal services designed to foster equal access to justice and an empowered approach to life. We fulfill our mission by providing free, quality services, primarily in the areas of matrimonial, family and immigration law, in a way that acknowledges mutual respect, encourages personal growth, and nurtures individual and collective strength. Informed by this work, inMotion promotes policies that make our society more responsive to the legal issues confronting the women we serve.

Catherine J. Douglass, Executive Director

inMotion, Inc.

100 Broadway, 10th Floor

New York, NY 10005

212-695-3800

212-695-9519 (fax)

www.inmotiononline.org

InMotion is tax-exempt under section 501(c)(3) of the Internal Revenue Code. Donations are tax-deductible to the extent allowed by law.

FINANCIAL OVERVIEW—FISCAL YEAR 2011 (JULY 1, 2010 – JUNE 30, 2011)

INCOME \$ 4,708,408

EXPENSES

Legal/Program Services \$ 2,752,620
Fundraising/Marketing 996,575
Management/General 316,906

Total Expenses 4,066,101

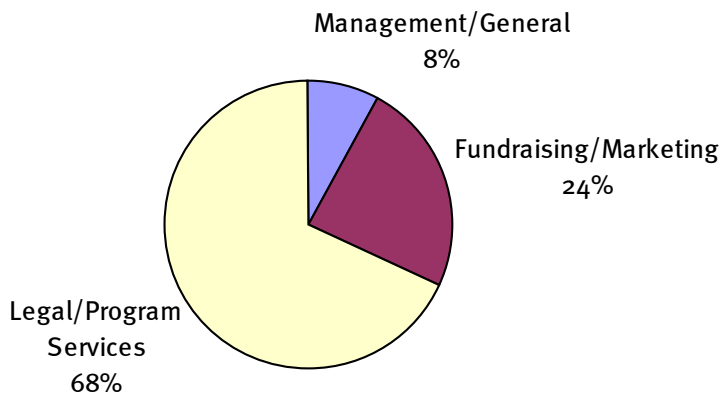
Net Income \$ 642,307

Total Assets \$ 4,814,653

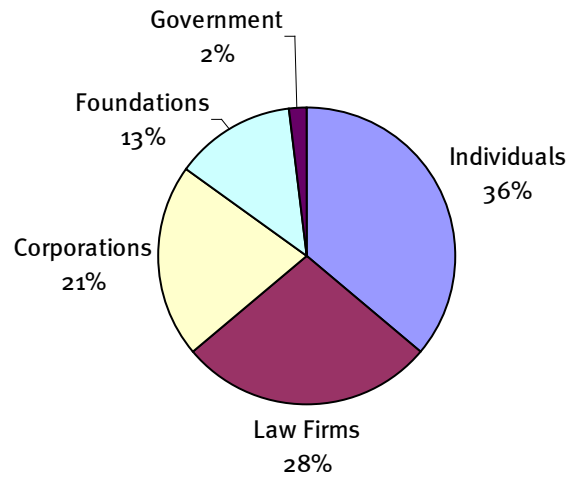
Total Liabilities 8,089

Total Net Assets \$ 4,806,564

Functional Expenses



Sources of Operating Support



BOARD OF DIRECTORS

Board Member	Affiliation/Occupation
Catherine J. Douglass, Esq. (<i>President</i>)	Executive Director, inMotion, Inc.
Myron Trepper, Esq. (<i>Chair</i>)	Senior Counsel, Willkie Farr & Gallagher LLP
Timothy R. Coleman (<i>Co-Vice Chair</i>)	Senior Managing Director, The Blackstone Group
Marla J. Mayer (<i>Co-Vice Chair</i>)	
Steven P. Clausen (<i>Treasurer</i>)	Partner, Ernst & Young
Jane DeFlorio (<i>Secretary</i>)	Managing Director, Deutsche Bank Securities
Tanja I. Aalto	
Jeffrey A. Brodsky	Managing Director, Quest Turnaround Advisors, LLC
Norma C. Corio	Managing Director and Treasurer, JPMorgan Chase & Co.
Lisa J. Donahue	Managing Director, AlixPartners, LLP
Matthew A. Feldman, Esq.	Partner, Willkie Farr & Gallagher LLP
Nancy Gardner, Esq.	EVP & General Counsel, Markets, Thomson Reuters
Marcia L. Goldstein, Esq.	Partner, Weil, Gotshal & Manges LLP
Erin E. Hill	Chief Financial Officer, One Equity Partners
Joyce Johnson-Miller	Senior Managing Director, Relativity Capital LLC
Alison Napack Kallman, Esq.	
Cathy M. Kaplan, Esq.	Partner, Sidley Austin LLP
David N. Koschik, Esq.	Partner, White & Case LLP
Patricia Lizarraga	Managing Partner, Hypatia Capital Group
Bryan P. Marsal	Co-Chief Executive Officer, Alvarez & Marsal
Darin P. McAtee, Esq.	Partner, Cravath, Swaine & Moore LLP
Bruce H. Mendelsohn	Partner, Goldman, Sachs & Co.
Edward A. Mulé	Chief Executive Officer and Portfolio Manager, Silver Point Capital
Peter V. Pantaleo, Esq.	Partner, Simpson Thacher & Bartlett LLP
Sandeep Qusba, Esq.	Partner, Simpson Thacher & Bartlett LLP
Craig L. Reicher	Vice Chairman, Tri-State Region, CB Richard Ellis
Eric M. Rosof, Esq.	Partner, Wachtell, Lipton, Rosen & Katz
Robert C. Schwenkel, Esq.	Partner, Fried, Frank, Harris, Shriver & Jacobson LLP
Sarat Sethi	Principal, Douglas C. Lane & Associates, Inc.
Roopesh Shah	Managing Director, Goldman, Sachs & Co.
Renotta L. Young, Esq.	Deputy Controller, Research Reporting and Financial Compliance, Columbia University